

Overview of Accommodation

This document has been written to support the facilitation of Leapskills. The intention is to provide a brief overview to support questions/queries.

Different student accommodation options

There are many different types of accommodation and it's really worth researching these as they vary hugely in regards to cost, facilities and support, location and contract length.

Uni-owned halls of residence

One of the easiest and most convenient options for a first-year student, because it's arranged through their university. City dependent, there is also a good chance that the accommodation will be on-campus or extremely close to it. These types of halls are also usually on the cheaper end of the spectrum.

Most likely, the setup will be that the students will get a room within a shared flat. So they will share a kitchen, a living space, and a bathroom with other students (usually between four and six).

This is applied to through the university once you have an offer to study.

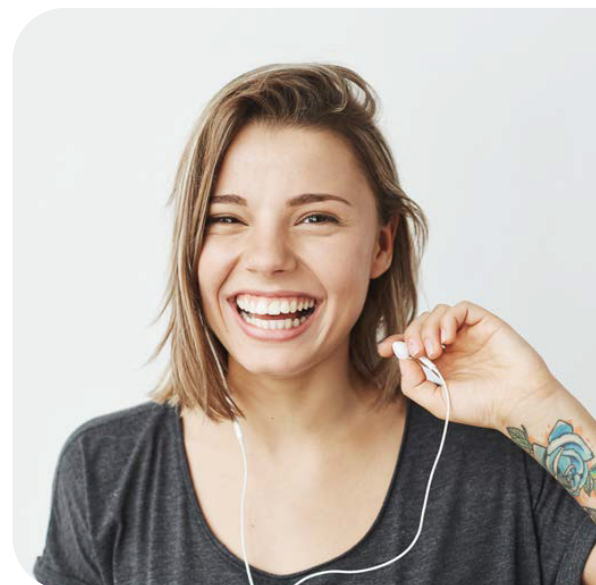
Private halls of residence, AKA private (purpose-built) student accommodation

The set-up is normally similar to Uni-owned halls of residence but they are normally finished to a higher spec with quality and stylish furnishings and different living options available which often include;

- An ensuite bedroom within a shared flat (shared between three and five students) this is the most common option and is great for making new friends.
- A studio is also quite a common option and is perfect for students who like their own space or peace and quiet.

Where uni-owned halls tend to offer the bare essentials, private halls tend to offer a lot more. This can and often includes gyms, games rooms, cinema rooms, stylish communal areas, comfy study areas, free on-site social events (like pizza nights, themed parties, etc.).

A good provider will put all the monthly costs into one lump sum to ease budgeting and payment. The overall cost will often include rent, utilities (including broadband), maintenance, and contents insurance.



Location can vary more with private accommodation and it is definitely worth researching travel distances. Due to the range of facilities and higher spec they do tend to be more expensive than university halls.

Unite Students falls into this category. Other PBSA providers are IQ, Liberty Living and Nido (although there are many others).

Private flat-share (or on your own)

This type of accommodation gives a lot more independence and freedom for students to live how they want to. With this option students will need to sort out all rent, paperwork, bills and cleaning/maintenance of the flat. The price of private renting can vary enormously.

Other Options

Do you need to move at all? Could you consider living with friends or family?

Support services

University accommodation providers typically offer a range of support services to students experiencing medical, physical or mental health difficulties or challenges. These can include services such as mental health support, welfare checks and signposting, such as Unite Students' Support to Stay framework. Be sure to research what's included when you're researching options.

All Universities have information available about their different accommodation options and it is strongly advised that this is researched before young people submit their UCAS choices.

