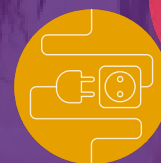


Find Your Potential



CareerSense

Royal Bank of Scotland



CareerSense

CareerSense is an Employability Education Programme that aims to inspire you to develop your skills, experience, and career opportunities. We hope to support you in building an awareness and understanding of your skills, so that you can be better prepared for the world of work.

Find Your Potential

We've designed an online tool to help you discover your strengths, things you may like to develop and jobs that could be a good match for you.

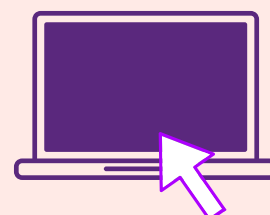
The online tool is made up of two main parts:

- A 20-minute online questionnaire that will help you think about options in a different way.
- A personalised report to support your personal development.

The Find Your Potential online tool will increase your confidence and self-awareness around your own skills to better prepare you for your future.

Sound good?

Try it out right now using [this link](#) or the QR code. If you can't, don't worry, you can take a look at the example report and complete your own later.



20-mins



After you've completed the online tool, ask yourself:



Do you think you are self-aware? How do you know?



What did you find challenging about the questions?



Do you think the report findings reflect your true thoughts and feelings?



Is there anything else you wish you had been asked and why?

After you've received your report, ask yourself:

Strengths and development areas (page 4)

- What were your highest rated skills, and why do you think these might be helpful in the workplace?

Personal insights and potential careers (pages 6-9)

- What was your lowest rated skill and what do you think you could do to develop it further?

Personal values (page 10)

- Choose one value and use the information to think about the types of organisations or jobs that this would apply to and note it below

Career pathways (page 11-17)

- After reading your report, which of the jobs highlighted do you think would be most suited to you and why? Remember that these are just examples, there's lots more jobs out there that might be suitable for you.

What's next?

To help you continue on your career journey, why don't you explore CareerSense at <https://www.mycareersense.com/> to find out more about:

- Making choices for your next steps.
- How extra-curricular activities can help you develop your skills.
- How to make the most out of work experience and volunteering.
- Job searching and using social media for work.
- Interview support and how to smash your first day at work.

Now complete our short feedback survey here:

<https://www.surveymonkey.co.uk/r/FindYourPotential>